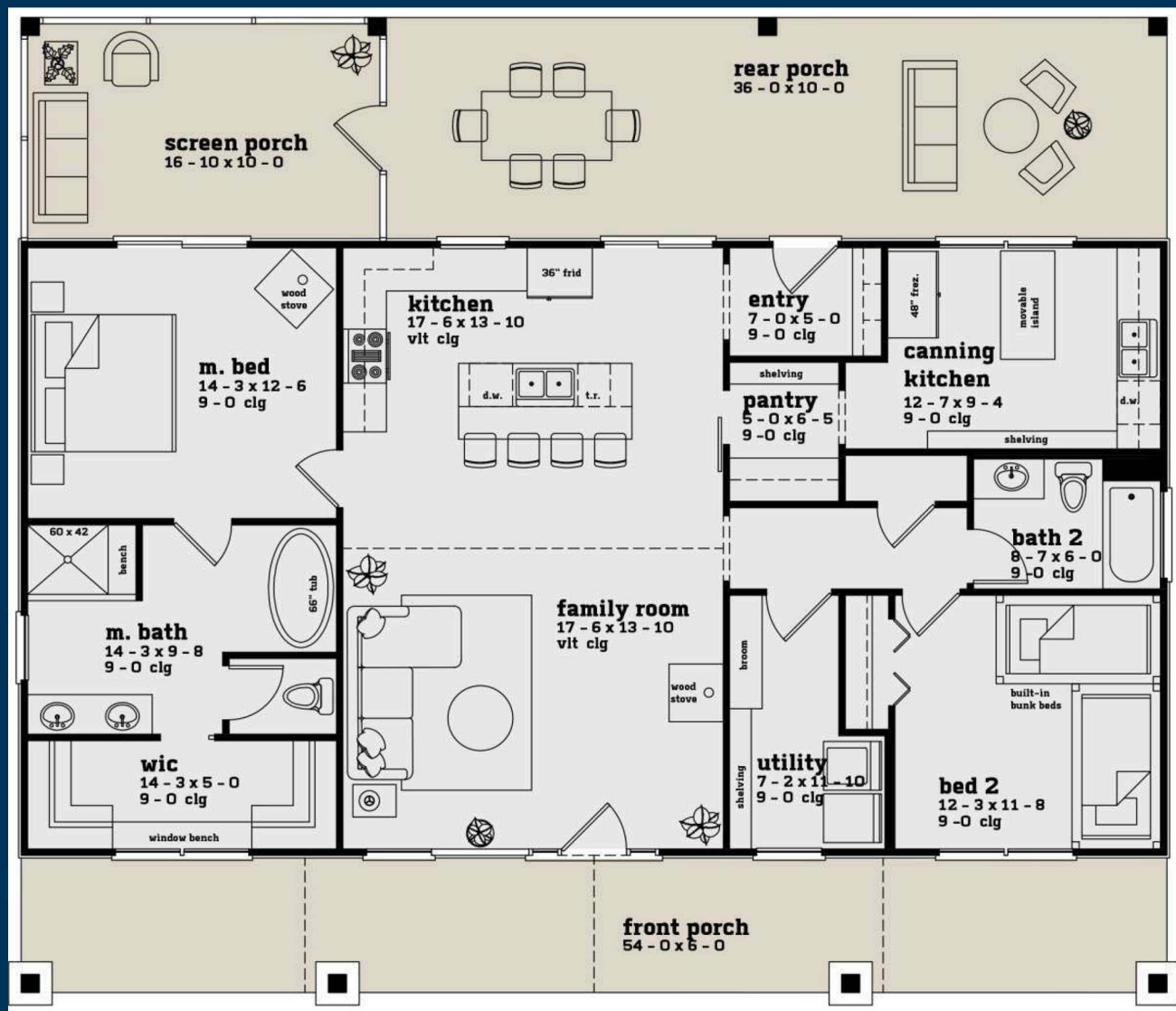


The Delmar



2-3 BR, 2 Bath, 1,497 SF

This super attractive, Craftsman house features 2-3 Bedrooms, 2 full baths, 1,497 square feet of living space, and a lovely front rear porch. The owner's suite features private access to the screened in porch, an oversized walk-in closet and a luxuriously appointed en suite bath. An optional loft/bonus room is situated overhead providing additional expansion room, if needed.



Information while deemed accurate is not guaranteed and is subject to change without notice, renderings may show options not included in base price.

SQ FT
1,497

BEDS
2-3

BATH
2

1/2 BATHS

0

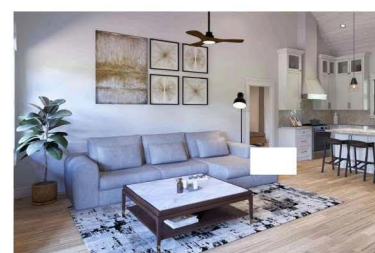
CAR
0-2

STORIES

1

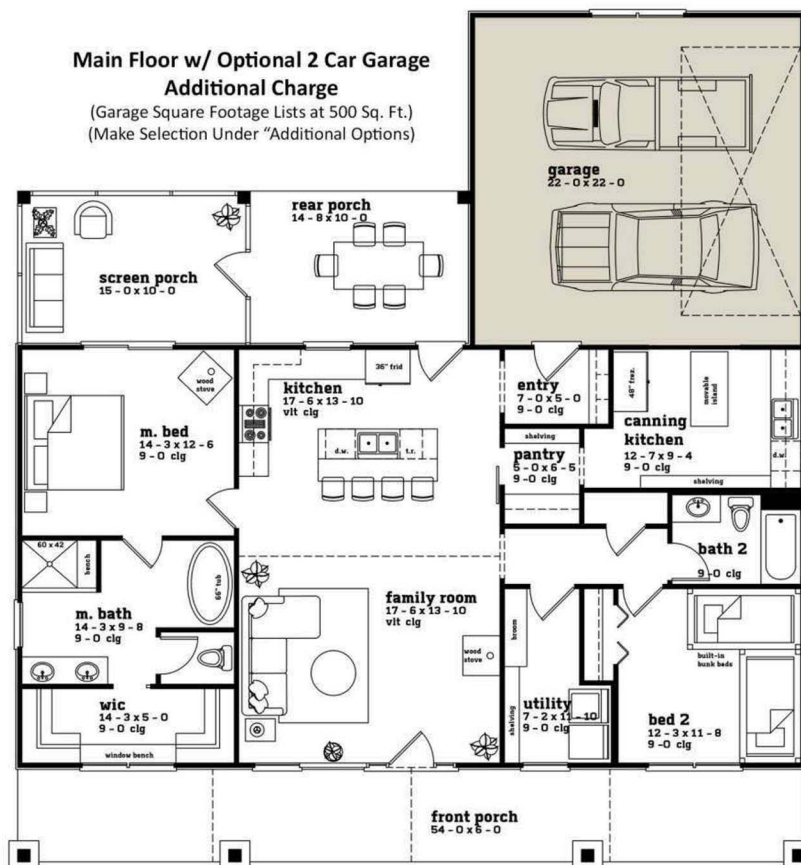
WIDTH
52' 10"

DEPTH
45'



**Main Floor w/ Optional 2 Car Garage
Additional Charge**

(Garage Square Footage Lists at 500 Sq. Ft.)
(Make Selection Under "Additional Options")



Let me help you build a new home!



Monument
Sotheby's
INTERNATIONAL REALTY



Robert Smith Jr

Vice President
Monument Sotheby's International Realty
Cell 443.956.3588
Office 410.525.5435
robert.smith@sothebysrealty.com

Serving all of your real estate needs