

The Belle River

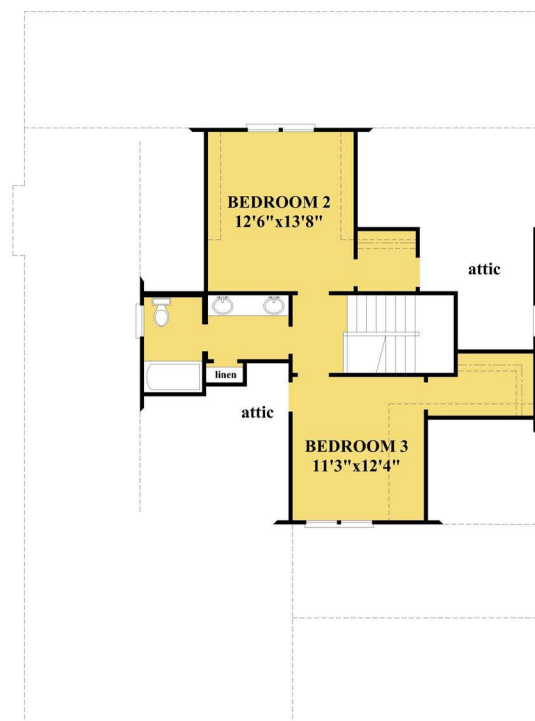


3 bedrooms, 2.5 baths, 1,914 sq ft.

This house plan offers an open floor plan, kitchen with large walk-in pantry and nice sized owner's suite all in a smaller footprint. The second floor features two bedrooms and two areas for walk-in attic space.



FIRST FLOOR PLAN
1354 HEATED SQUARE FEET



SECOND FLOOR PLAN
560 HEATED SQUARE FEET

House Plan Specifications- 1,914 SQ FT

Foot Print 45'-0"x61'-4" w/o stairs

Stories 2

Bedrooms 3

Bathrooms 2.5

First Floor Ceiling Height 9'

Second Floor Ceiling Height 9'

House Width 45' 0"

House Depth 61' 4"

Foundation Crawl Space

Garage Front Load



Let me help you build a new home!



Monument
Sotheby's
INTERNATIONAL REALTY



Robert Smith Jr

Vice President
Monument Sotheby's International Realty

Cell 443.956.3588
Office 410.525.5435
robert.smith@sothebysrealty.com

Serving all of your real estate needs