

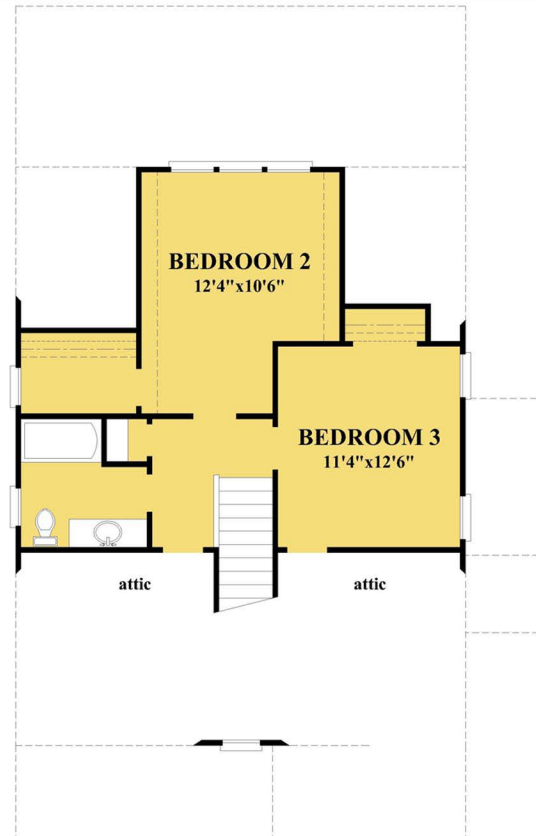
The Avon



Avon is a great coastal small house plan with rear oriented views featuring an open floor plan and main level owner's suite.



FIRST FLOOR PLAN
1129 HEATED SQUARE FEET



SECOND FLOOR PLAN
513 HEATED SQUARE FEET

The Avon

House Plan Specifications SQ FT 1642

Foot Print 33'0"x52'0"

Stories 3

Bedrooms 3

Bathrooms 2.5

Ground Floor Ceiling Height 8'

First Floor Ceiling Height 9'

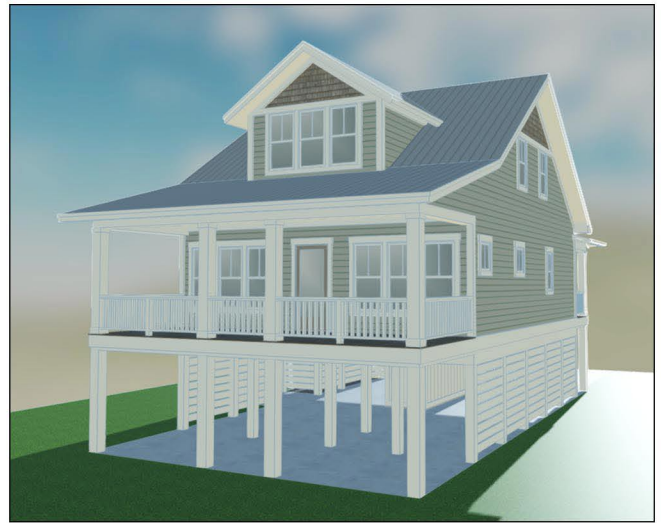
Second Floor Ceiling Height 8'

House Width 33' 0"

House Depth 52' 0"

Height, above ground floor slab 33'

Foundation Pilings



Let me help you build a new home!

 **Smith&Co**
at
Monument Sotheby's
INTERNATIONAL REALTY



Robert Smith Jr

Vice President
Monument Sotheby's International Realty

Cell 443.956.3588
Office 410.525.5435
robert.smith@sothebysrealty.com

Serving all of your real estate needs