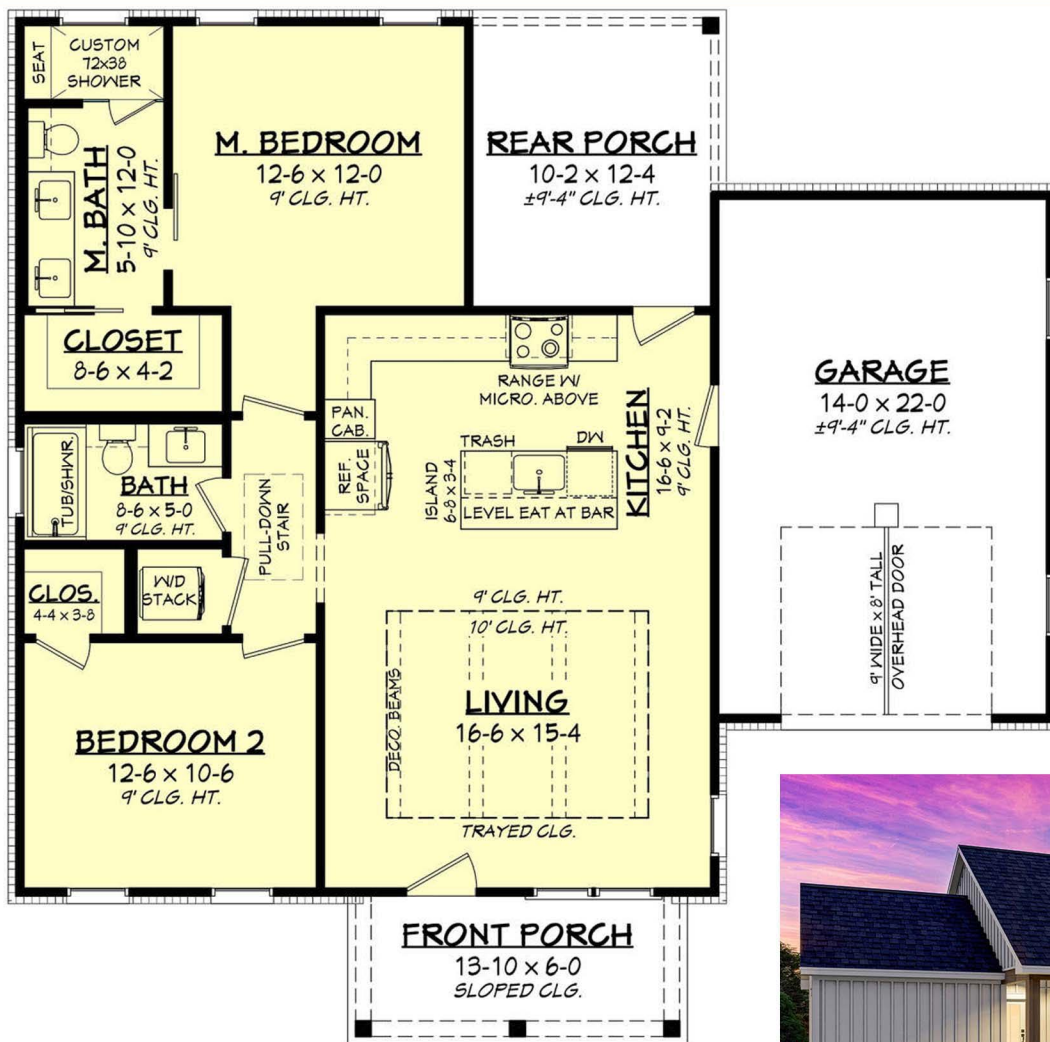
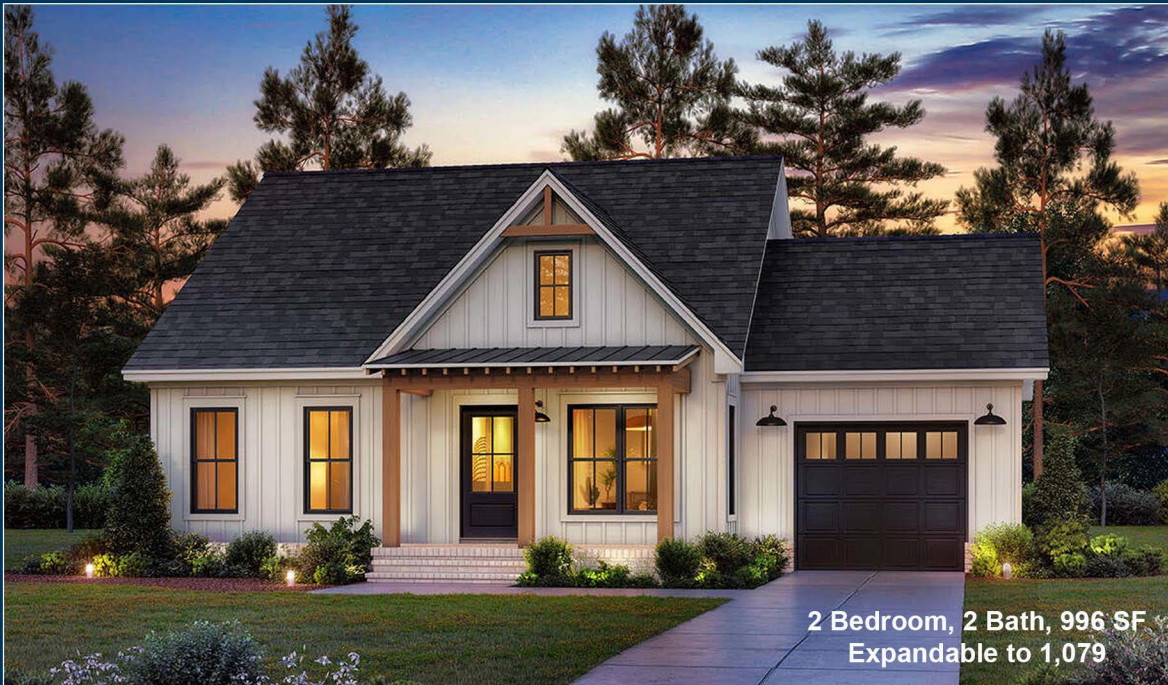


The Sandy



The Sandy is a 2 Bedroom, 2 Bath, open floor plan home with a standard square foot of 996 but can be expanded to 1,079. The home features a large great room that opens to the kitchen and dining area. The home has a one car garage making it a perfect combination of style and affordability. Great for a couple wanting to downsize, second home, or great for the first time home buyer. Take advantage of the amenities at Captain's Cove and its close proximity to the beach.





SQ FT
996



BEDS
2



BATH
2



1/2 BATHS
0



CAR
1



STORIES
1



WIDTH
44' 4"



DEPTH
43' 6"



Let me help you build a new home!

 **Smith&Co**
at
Monument Sotheby's
INTERNATIONAL REALTY



Robert Smith Jr
Vice President
Monument Sotheby's International Realty
Cell 443.956.3588
Office 410.525.5435
robert.smith@sothebysrealty.com

Serving all of your real estate needs