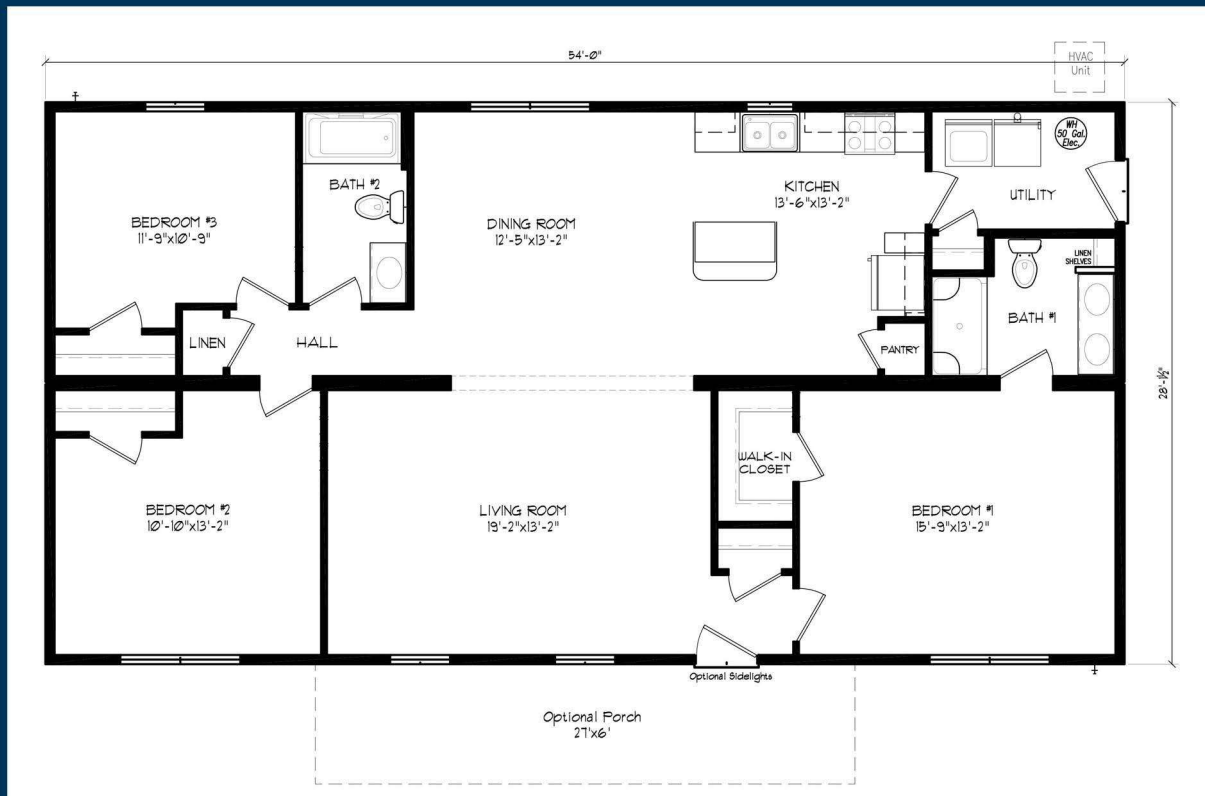


# The Delmarva

3 bedrooms, 2 baths, 1,512 sq ft.



The Delmarva with its many customizable options, 3 BR, 2 Bath, 1512 sq. ft. home offers the perfect amount of space for either a starter home, or one to downsize and retire. Upon entering the main entry you'll find a large open living room that connects into the dining room and kitchen. The kitchen features an island and a reach in pantry. The "Owner's Bedroom" is located just off the main entrance and access to this room is located here; this creates privacy from the other rooms in the home. Bedrooms 2 and 3 are located on the adjacent side and can be used as such - or one room may be created into a private office "or study.



Information while deemed accurate is not guaranteed and is subject to change without notice, renderings may show options not included in base price.