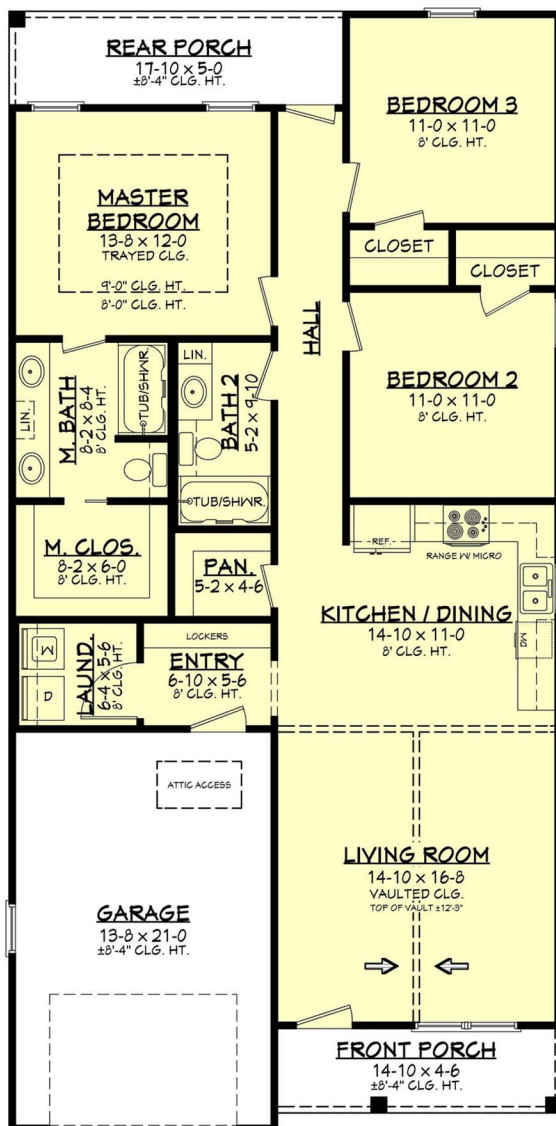


# The Keel



3 Br, 2 bath, 1,292 sf



*This charming Modern Farmhouse design offers a cottage feel to its form and function principle of design. A small simple layout is happily ensconced in a delicate exterior balance of board and batten, warm woods, and a covered front porch. There is a one car front entry garage with nice exterior hardware that also complements the home's exterior and the overhead gables add interest and character. The interior floor plan features approximately 1,300 square feet of living space and provides three bedrooms and two baths. The less than 30' in width also makes this plan a terrific value for a narrow property lot. Walking into the home off the front covered porch, you are greeted with a vaulted living room and an adjoining kitchen and dining space.*





SQ FT

1,292



BEDS

3



BATH

2



1/2 BATHS

0



CAR

1



STORIES

1



WIDTH

29' 6"



DEPTH

59' 10"



*Let me help you build a new home!*



Monument  
Sotheby's  
INTERNATIONAL REALTY



**Robert Smith Jr**

Vice President  
Monument Sotheby's International Realty

Cell 443.956.3588

Office 410.525.5435

robert.smith@sothebysrealty.com

*Serving all of your real estate needs*