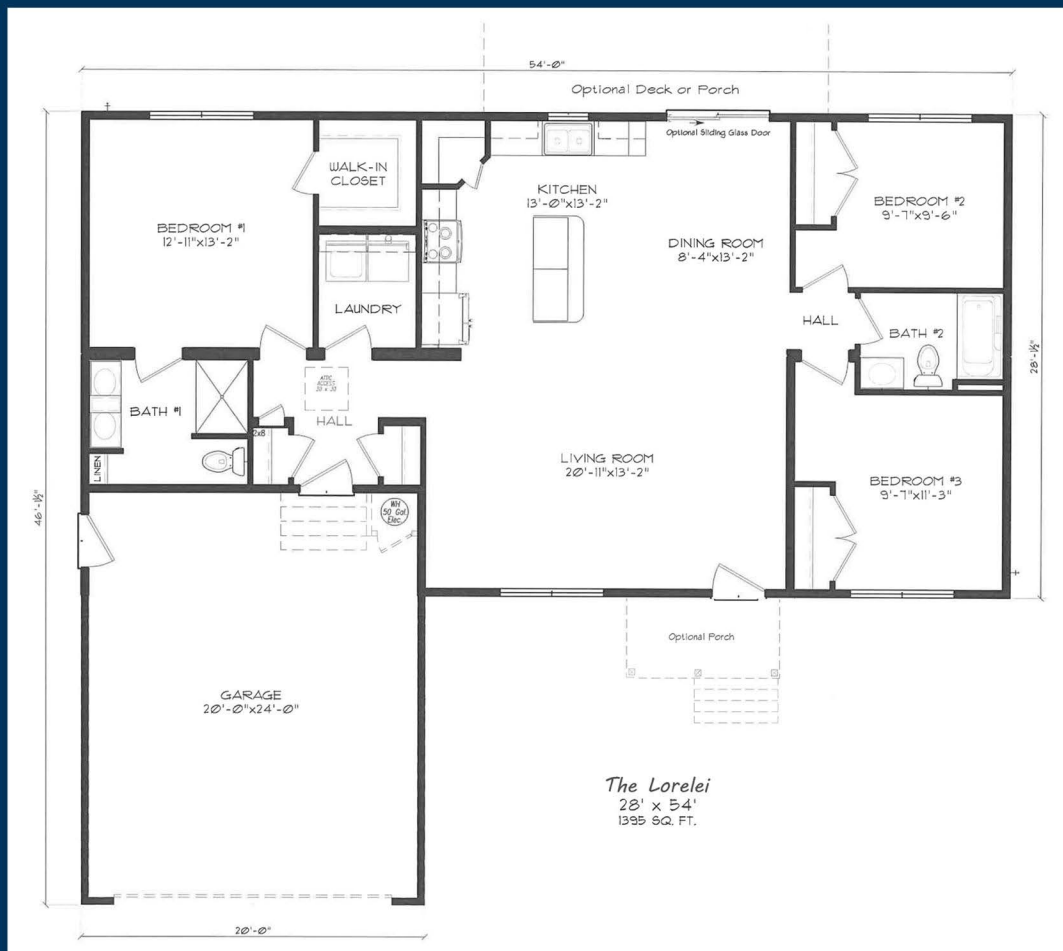


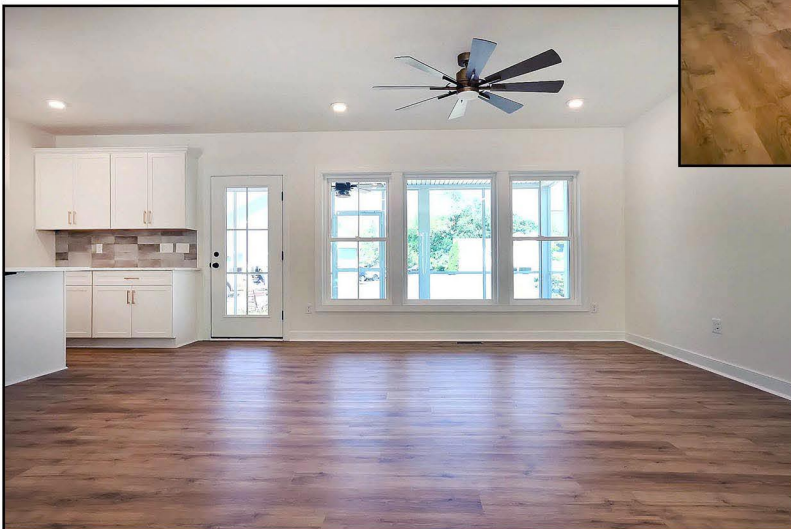
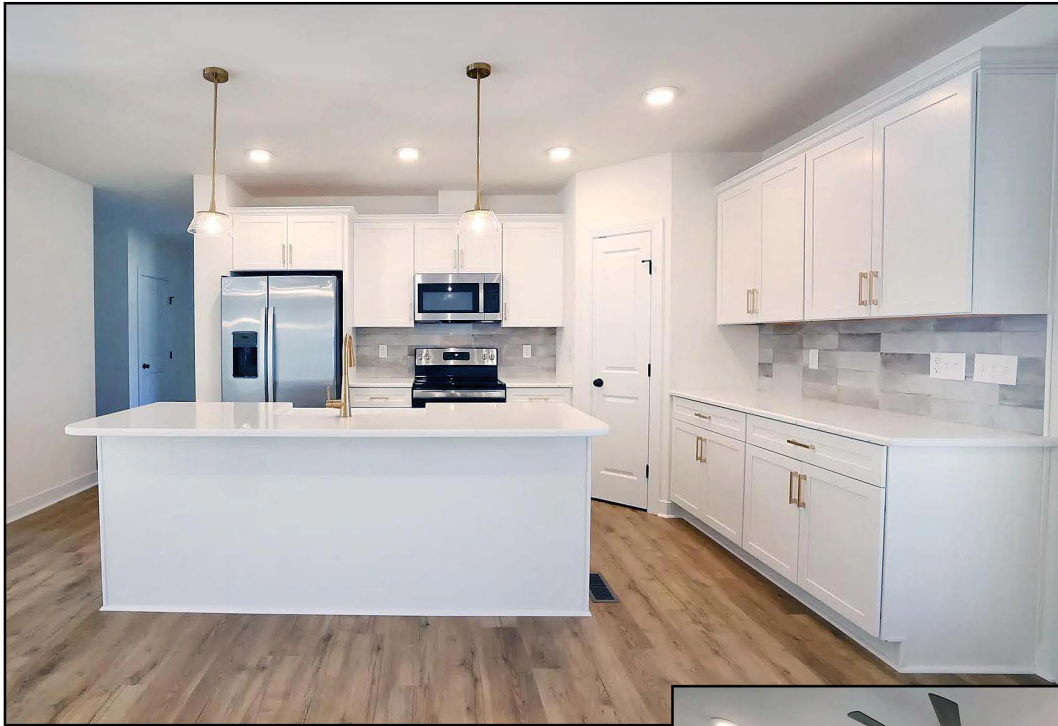
The Lorelei



3 bedrooms, 2 baths, 1,395 sq. ft.

The Lorelei rancher is a blend of affordability and comfort. This 1,395 sq. ft. rancher offers a seamless balance of private and shared spaces - ideal for modern family living. Upon entering, a welcoming kitchen and family room serve as the home's main area, drawing family members for moments of togetherness and celebration. The Owner's Suite is off to one side of the home a personal sanctuary ensuring peace and privacy. Conversely, two additional bedrooms offer versatility for children, guests, or a home office. With an attached garage for easy entry, the Lorelei Rancher is a wonderful layout.





Let me help you build a new home!



Monument
Sotheby's
INTERNATIONAL REALTY



Robert Smith Jr
Vice President
Monument Sotheby's International Realty
Cell 443.956.3588
Office 410.525.5435
robert.smith@sothebysrealty.com

Serving all of your real estate needs