

The Ariel



This Modern Farmhouse Plan boast 3-bedroom, 2-full bath, 1-1/2 bath, 2-3 car garage, and 1,924 SF of living space. An open floor plan connecting the family room, kitchen and eating area into one generous living space. Granite counter tops, vinyl luxury plank flooring, expanded wood trim around doors & window, 2x6 exterior construction with blown-in insulation are standard features.





SQ FT

1,924



CAR

2-3



BEDS

3



STORIES

1



BATH

2



WIDTH

61' 7"



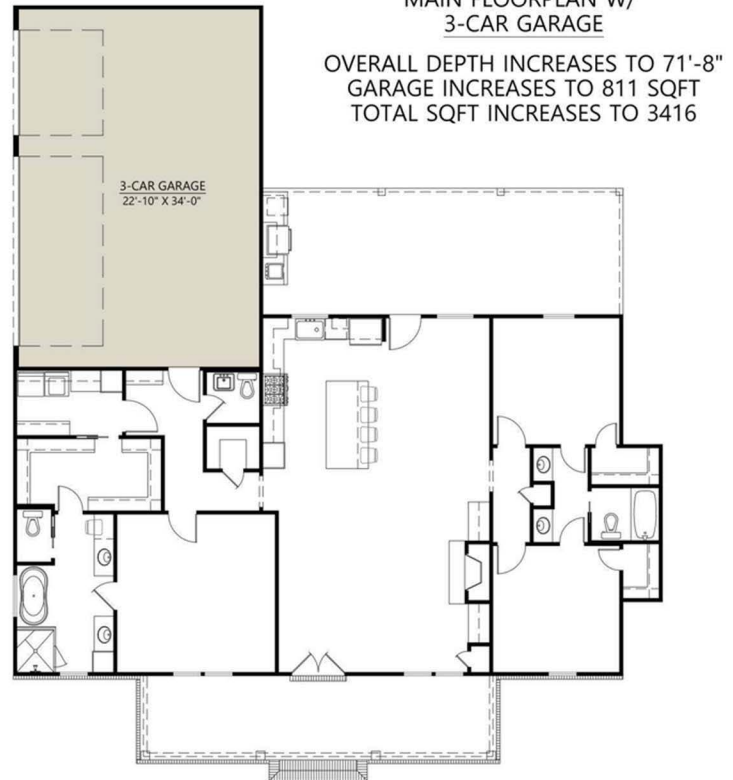
1/2 BATHS

1



DEPTH

61' 8"



Let me help you build a new home!



Monument
Sotheby's
INTERNATIONAL REALTY



Robert Smith Jr

Vice President
Monument Sotheby's International Realty

Cell 443.956.3588
Office 410.525.5435
robert.smith@sothebysrealty.com

Serving all of your real estate needs