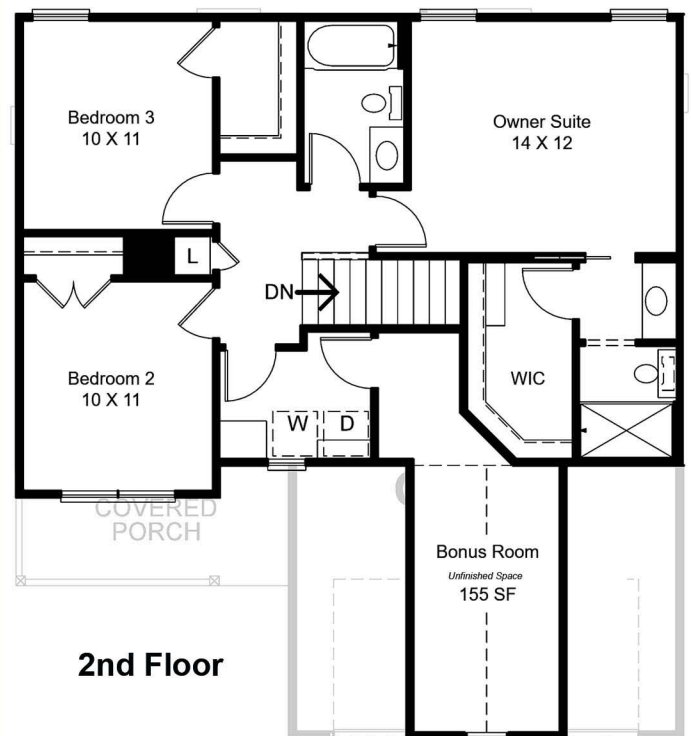
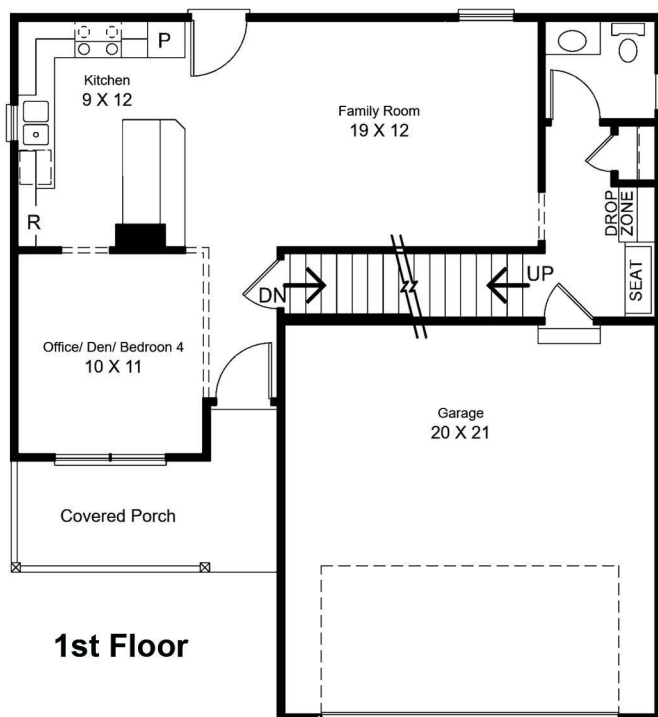


The Cayman



3/4 BR, 2 Bath, 1 Half Bath, 1,460 SF

Enjoy this spacious 3-bedroom, 2 ½ bath craftsmen style colonial. This 2-story has an open floor plan; the kitchen opens to a large family room and the first floor contains a flex room that could be used as an office/den or another bedroom if needed. This home contains many options that are standard, granite counter tops, vinyl luxury plank flooring, wood trim around doors & window, 2x6 exterior construction with blown-in insulation making it highly energy efficient.



SQ FT
1,460

BEDS
3

BATH
2

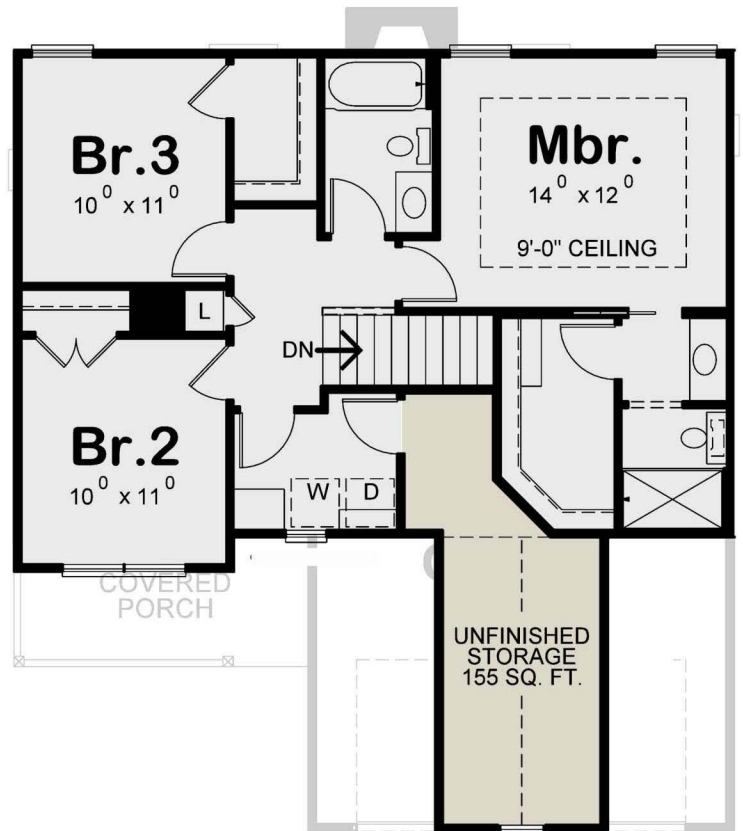
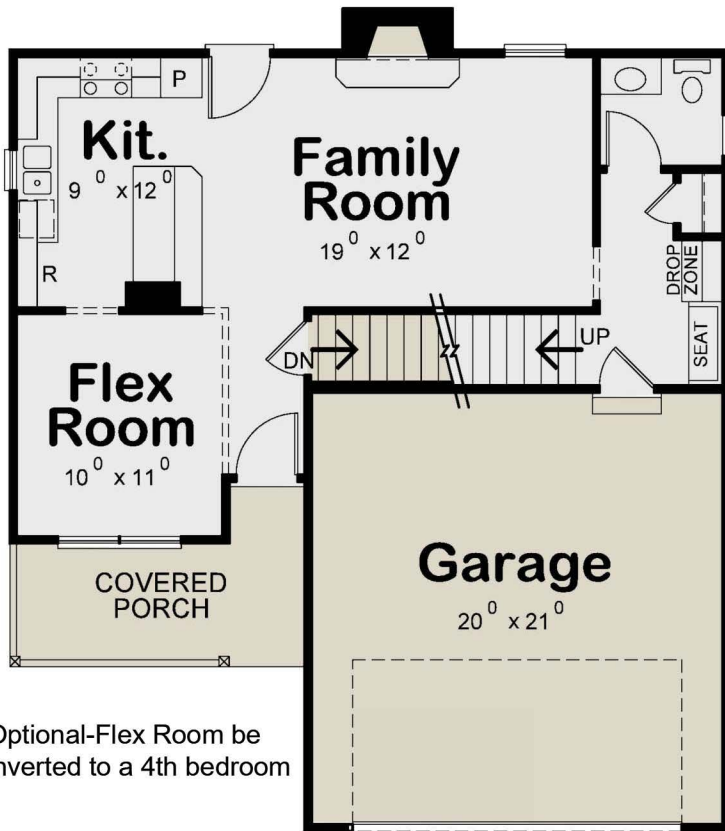
1/2 BATHS
1

CAR
2

STORIES
2

WIDTH
35'

DEPTH
38'



DETAILS

HEATED SQ FT

TOTAL HEATED AREA:	1,460 sq. ft.
FIRST FLOOR:	679 sq. ft.
SECOND FLOOR:	781 sq. ft.

UNHEATED SQ FT

GARAGE:	423 sq. ft.
BEDROOMS:	3
FULL BATHS:	2
HALF BATHS:	1
FLOORS:	2
GARAGE SIZE:	2 car

FEATURES

- Master Up
- Front Entry Garage
- Open Floor Plan
- Laundry Second Floor
- Front Porch
- Flex Room
Mud Room

Let me help you build a new home!



Monument
Sotheby's
INTERNATIONAL REALTY



Robert Smith Jr
Vice President
Monument Sotheby's International Realty
Cell 443.956.3588
Office 410.525.5435
robert.smith@sothebysrealty.com

Serving all of your real estate needs